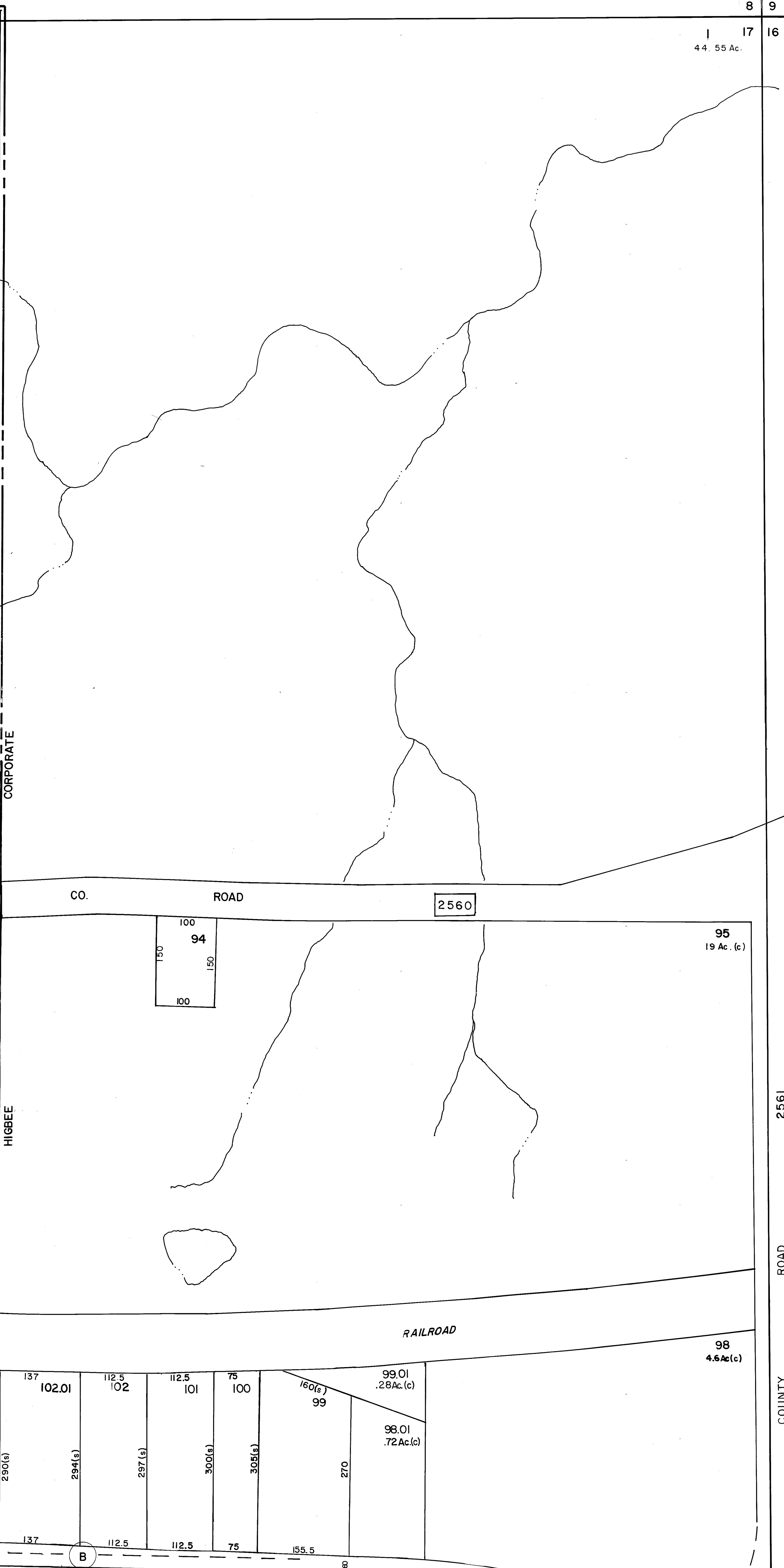
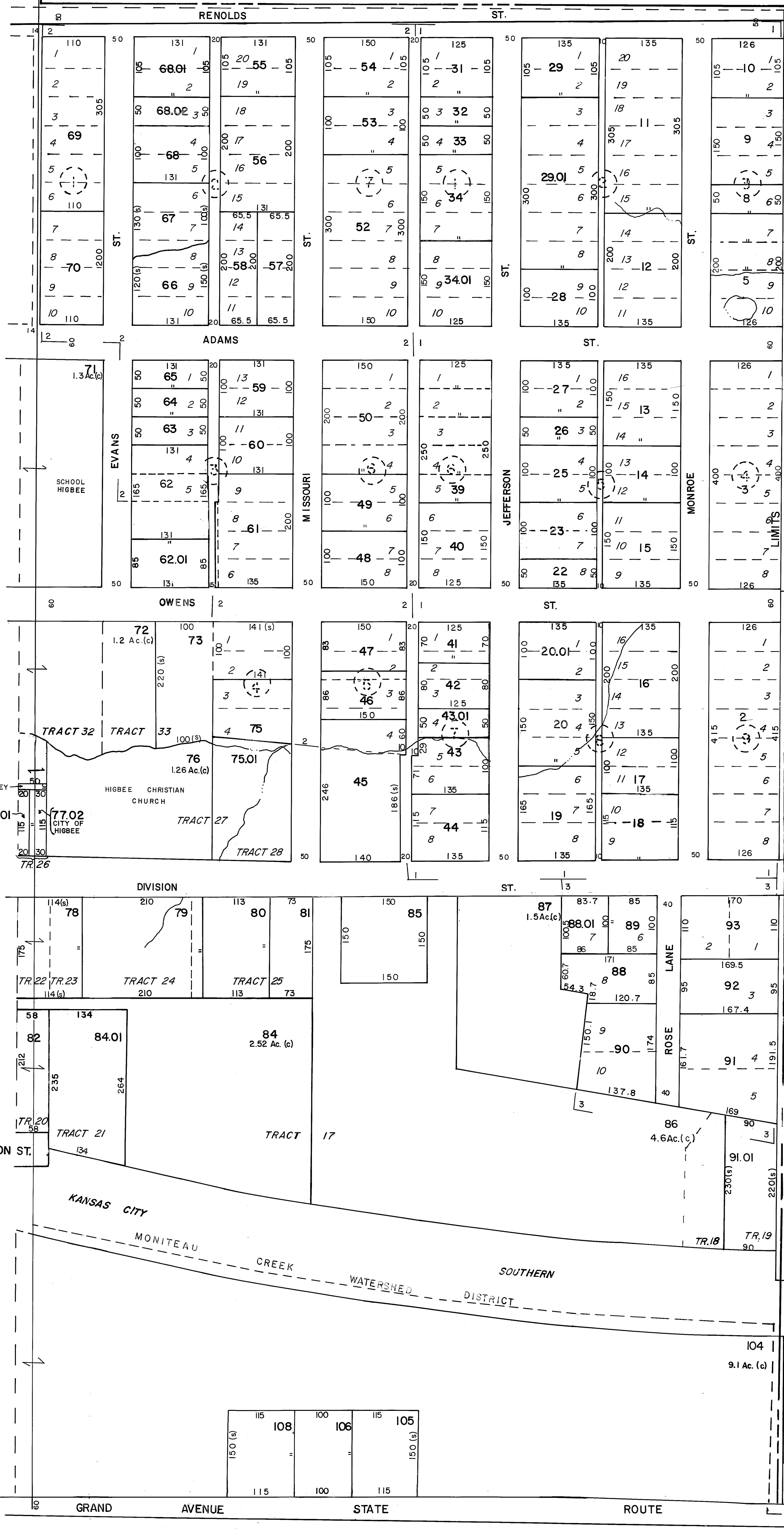


15-3-06

8 9

17 16  
44.55 Ac.



15-5

15-4-17-4

MONITEAU CREEK WATERSHED DISTRICT

HIGBEE R-8

**OWNERSHIP MAP**  
**RANDOLPH COUNTY, MISSOURI**  
 PREPARED UNDER THE DIRECTION OF  
**STATE TAX COMMISSION OF MISSOURI**  
 AND  
**RANDOLPH COUNTY TAX ASSESSOR**  
 PREPARED BY  
**ROBINSON AND ASSOCIATES, INC.**  
 306 OAK AVE., SPRUCE PINE, N.C. 28777

SCALE: 1" = 100'  
 DATE OF MAP: JUNE 4, 1981  
 DATE OF PHOTOGRAPHY: NOV, 1980  
 AERIAL PHOTO NO. NE 1/4 17 52-14

SUBD. NO.	SUBDIVISION NAME	PLAT BOOK	PAGE
1	RENNOLD'S FOREST PARK ADD.	P.B. A	PG. 33
2	ADAMS & EVANS ADD.	P.B. A	PG. 24
3	ROLLING HILLS SUB.	VOL. 4	PG. 14

**LEGEND**

STATE LINE ——— AREA (FROM DEED) 10.5Ac.  
 COUNTY LINE ——— AREA (CALCULATED) 10.5Ac.(c)  
 CORPORATION LINE ——— DIMENSION (FROM DEED) 16.5  
 DISTRICT LINE ——— DIMENSION (CALCULATED) 66'(s)  
 ROAD R/W ——— SUBDIVISION LOT NUMBER 23  
 TOWNSHIP & RANGE LINES ——— PARCEL NUMBER 45  
 RAILROAD R/W ——— WATER  
 PROPERTY LINE ——— INTERSTATE HIGHWAY (55)  
 LAND HOOK ——— U.S. HIGHWAY (50)  
 SECTION LINE ——— STATE HIGHWAY (1)  
 INTERIOR OR ORIGINAL TRACT LINE ——— COUNTY HIGHWAY (33)  
 BLOCK LIMIT (WHERE APPLICABLE) ——— ROADS, STREETS, CHURCHES, ETC. BY NAME  
 SECTION CORNERS ——— 2 1 11 12

**MAP SHEET INDEX**

6	5	4	3	2	1
7	05	02		01	
8	9	10	11	12	
18	17	16	15	14	13
19	20	21	22	23	24
30	29	28	27	26	25
09	08	07			
31	32	33	34	35	36

**TOWNSHIP LOCATOR**

R16W	R15W	R14W	R13W	
T55N	04	03	02	01
T55N	05	06	07	08
T54N	12	11	10	9
T53N	13	14	15	16

SECTIONS NE 1/4 SEC.17  
 TWP. 52 N. RNG. 14 W.  
 33-15-4-17-1  
 MAP NUMBER

**REVISIONS**

DATE	BY	CHANGES OR ADDITIONS